

# Human IL-17E Protein; His Tag

## Product Information

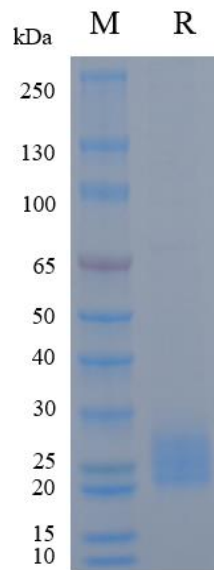
Product Name	Human IL-17E Protein; His Tag
Storage temp	Store at $\leq -70^{\circ}\text{C}$ , stable for 6 months after receipt. Recommend to aliquot the protein into smaller quantities for optimal storage. Please minimize freeze-thaw cycles.
Catalog# / Size	GM-88038RP-100 / 100 $\mu\text{g}$ GM-88038RP-1000 / 1 mg

## Protein Information

Alternative Names	IL-17E, IL-25, Interleukin-25
Source	Human IL-17E Protein; His Tag (GM-88038RP) is expressed from human 293 cells (HEK-293). It contains AA Tyr 33 - Gly 177 (Accession # Q9H293). This protein carries a His tag at the C-terminus.
Purity	> 90% as determined by SDS-PAGE
Endotoxin	< 1 EU/ $\mu\text{g}$ , determined by LAL gel clotting assay
Predicted Mol Mass	16.7 KDa
Formulation	Supplied as a 0.2 $\mu\text{m}$ filtered solution of PBS, pH7.2-7.4.
Description	<p>IL-17E, also known as IL-25, is a cytokine and a member of the IL-17 family. Although it belongs to the same family, the biological functions of IL-17E differ from many other IL-17 family members. IL-25 is primarily secreted by epithelial cells, dendritic cells, and other cell types, and it plays a crucial role in immune responses, especially in mucosal barrier-related immune regulation and in promoting type 2 (Th2)-biased responses. IL-25 transmits signals by binding to its receptor IL-17RB (also known as one component of IL-17RE), thereby activating specific cell populations and promoting the production of inflammatory mediators.</p> <p>A core function of IL-25 is to promote Th2-skewed immune responses, induce eosinophil infiltration, and enhance the defense of mucosal barriers. In contexts such as allergic diseases and certain parasitic infections, IL-25 can amplify the expression of Th2 cytokines including IL-4, IL-5, and IL-13, driving a more polarized mucosal immune response. Meanwhile, IL-25 participates in the communication network between epithelium and immune cells, regulating the balance between type 1 and Th2 immune responses, and interacting with other IL-17 family members in local microenvironments.</p>

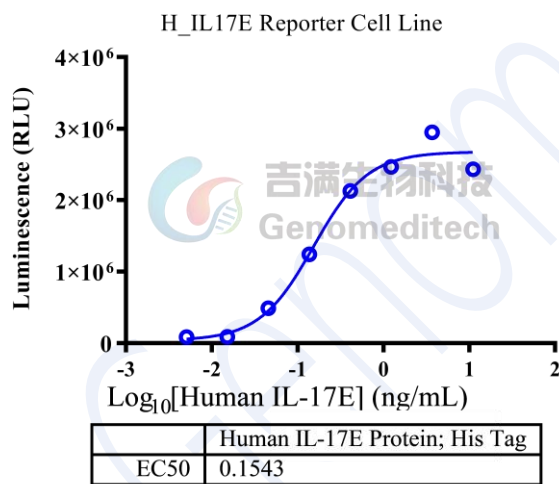
Version:4.0

## SDS-PAGE



On SDS-PAGE under reducing (R) condition. The gel was stained overnight with Coomassie Blue. The purity of the protein is greater than 90%.

## Bioactivity-CELL BASE



Human IL-17E Protein; His Tag (Catalog # GM-88038RP) was added into H\_IL17E Reporter Cell Line (In house) and stimulates related signals.